

Construction Started **January, 2013**

THE TOLEDO ZOO'S AQUARIUM 2015

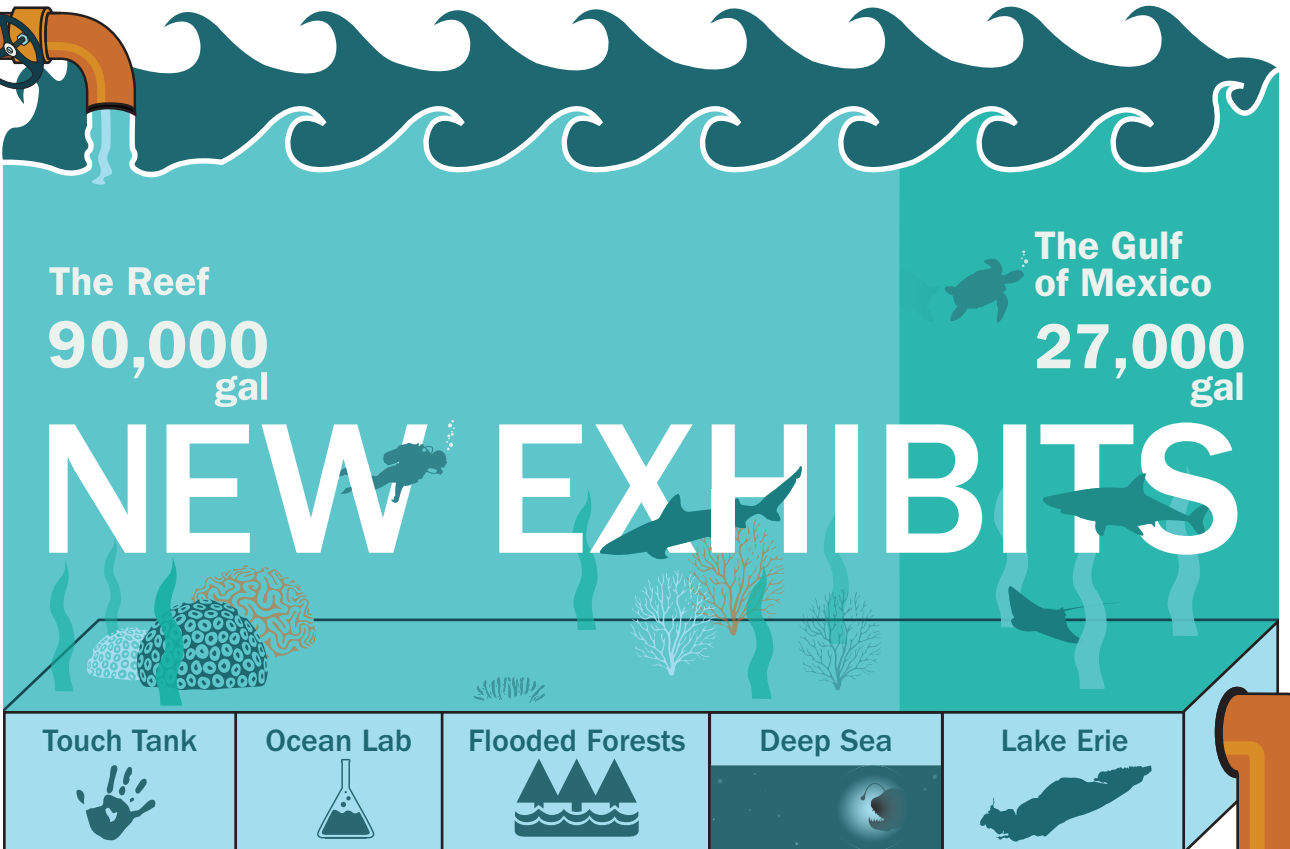
4,934
man hours

\$3.5
million

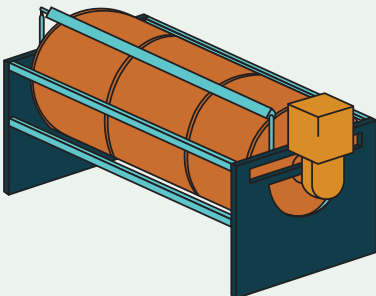
200
Species

3,000+
Aquatic
Animals

30,000
sq ft.



BEHIND THE SCENES



The **first zoo in the world** to use Drum Filters in a public aquarium

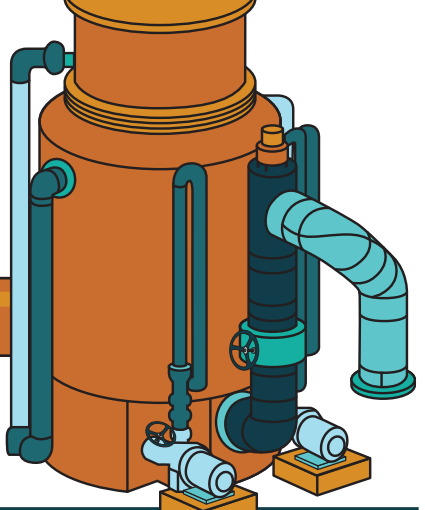
4,744
Fittings
(1 every 4ft.)

856
Valves
(1 every 22ft.)

FOAM FRACTIONATORS
(protein skimmers)

19,443 ft.
(3.7 Miles) of pipe.

15,516 gl.
Total carrying capacity



Aquarium Opened
March, 2015